



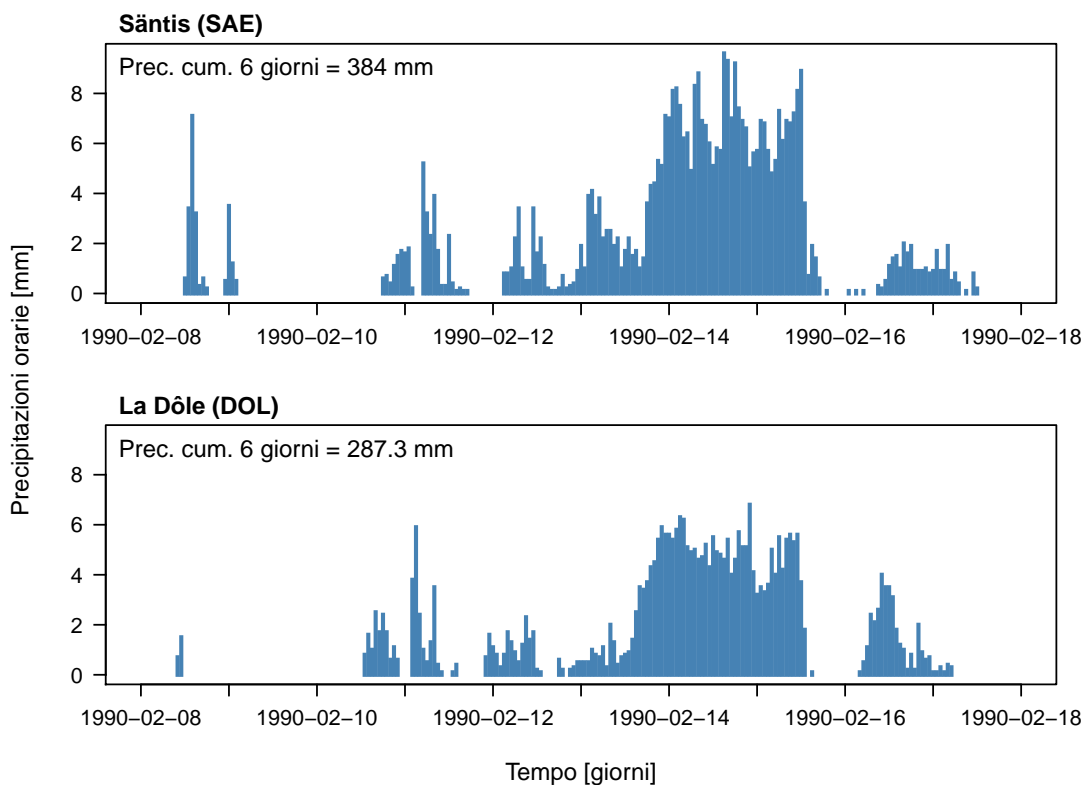
Evento del 10-15 febbraio 1990

Evento di precipitazioni con impatti nel Giura, nelle Alpi vodesi e sul pendio nordalpino orientale

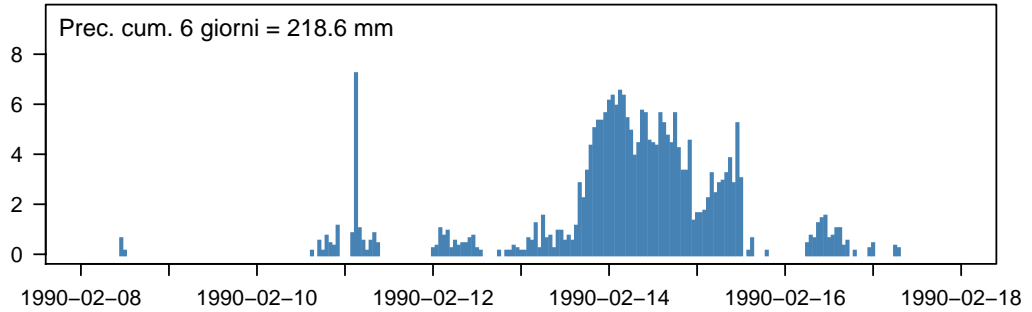
Ietogrammi

Precipitazioni orarie, hh:40-hh:40 UTC

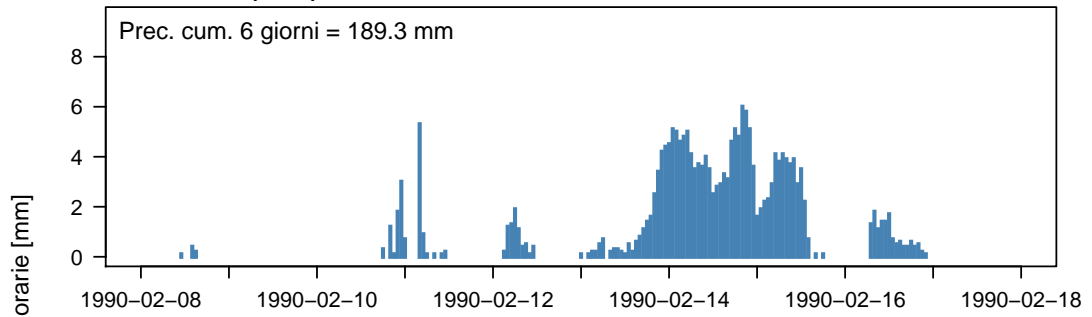
Ietogrammi per 10 stazioni aventi precipitazioni cumulate alte su un intervallo della durata di 6 giorni



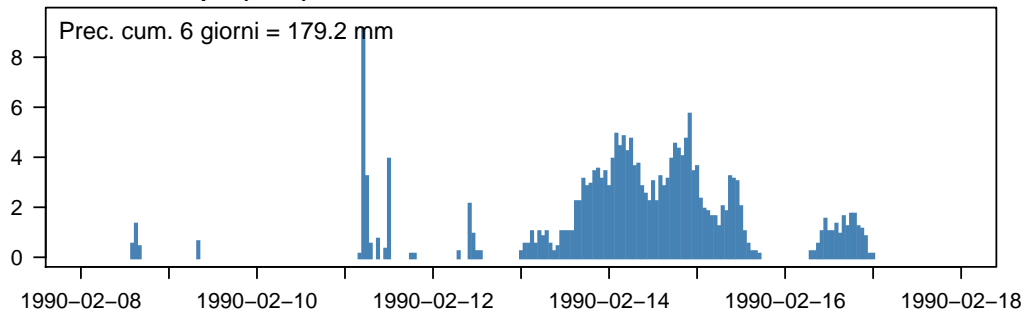
Bullet / La Frétaz (FRE)



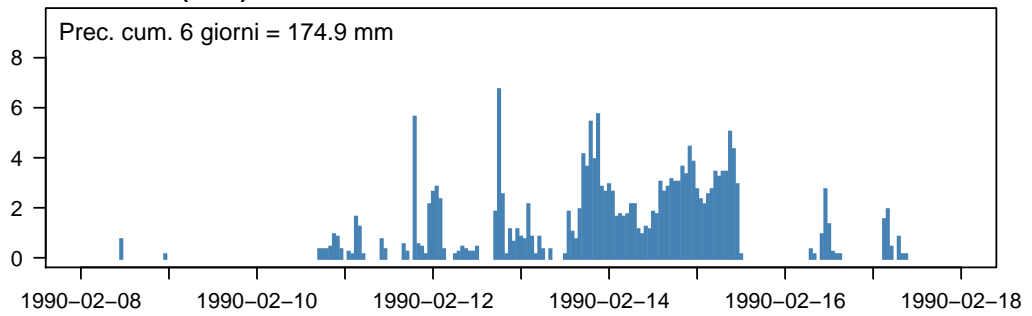
Adelboden (ABO)



Grimsel Hospiz (GRH)

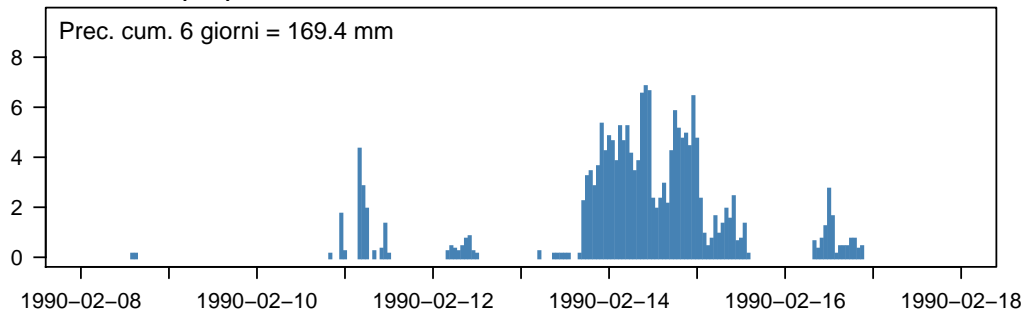


Chasseral (CHA)

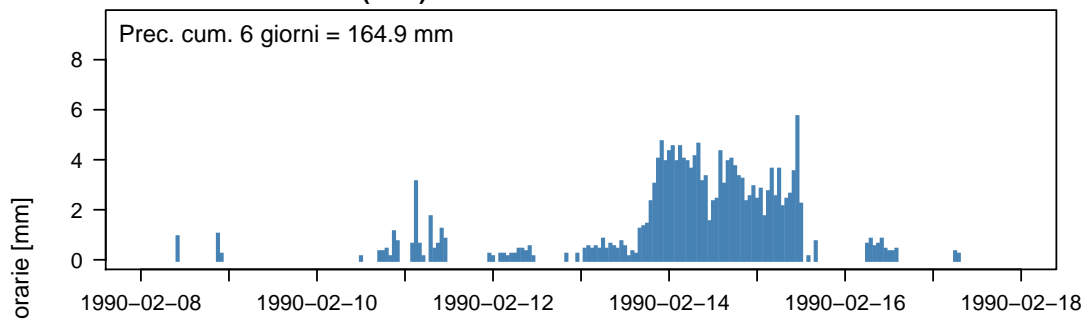


Tempo [giorni]

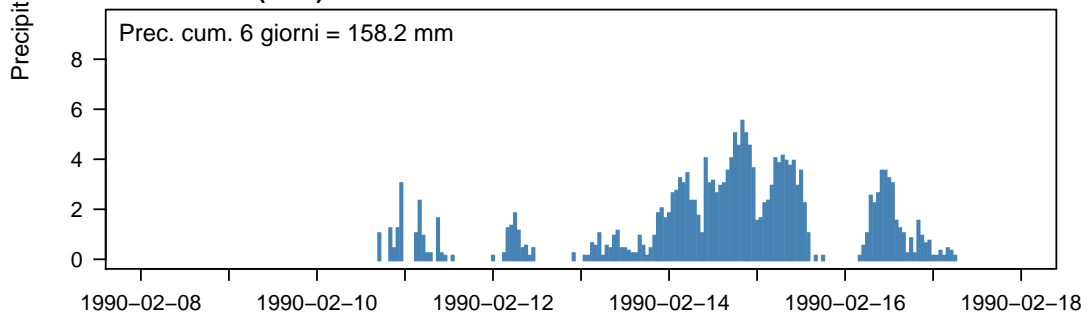
Interlaken (INT)



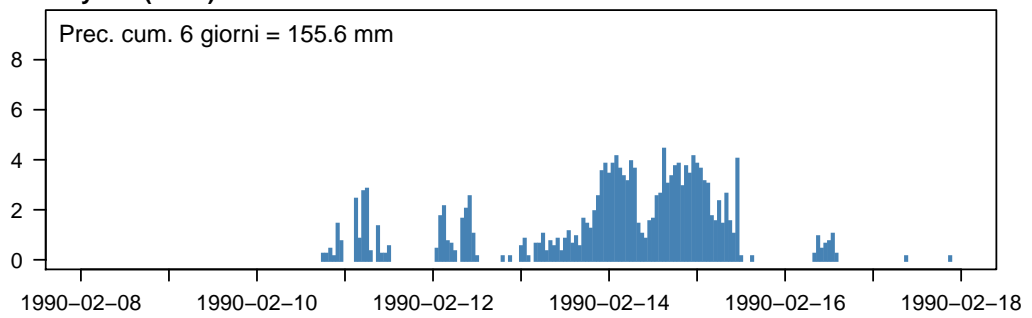
La Chaux-de-Fonds (CDF)



Le Moléson (MLS)



Wynau (WYN)



Tempo [giorni]